

ARPA PRESENTATIONS

April 12th

Tuesday Morning

- | | |
|-------------|--|
| 9:00-9:15 | Call to Order / Pledges / Welcome |
| 9:15-9:35 | Presentation #1 – Slide – Children’s Advocacy Center – Tammy King, Executive Director |
| 9:35-9:45 | Q & A |
| 9:45-10:05 | Presentation #2 – Slide – H.I.M. Center Food Bank – Lisa Richardson, President & Chief Executive Officer |
| 10:05-10:15 | Q & A |
| 10:15-10:35 | Presentation #3 – Handout – S.H.I.N.E Together – Shana Peacock, Founder |
| 10:35-10:45 | Q & A |
| 10:45-11:05 | Presentation #4 – Cleburne Friends of the Cultural Arts (JN Long Cultural Arts Complex)
– Barbara Lane, Board President |
| 11:05-11:15 | Q & A |
| 11:15-11:35 | Presentation #5 – Slide – A Change for Christ – Conrad Jackson, Finance Director |
| 11:35-11:45 | Q & A |
| 11:45-12:00 | Wrap up for lunch / Recess till 1:30 |

Tuesday Afternoon

- | | |
|------------|--|
| 12:00-1:30 | Lunch |
| 1:30-1:45 | Welcome Back |
| 1:45-2:05 | Presentation #6 – Slide/Handout – Open Door Ministries – Barry Gee, Chief Financial Officer |
| 2:05-2:15 | Q & A |
| 2:15-2:35 | Presentation #7 – Slide – Harvest House – Jennifer Woods, Executive Director |
| 2:35-2:45 | Q & A |
| 2:45-3:05 | Presentation #8 – Handout – Next Step Women’s Center – Jane Burton, Board Member
Summer Garcia, Executive Director & William Perryman, Board Member |
| 3:05-3:15 | Q & A |
| 3:15-3:35 | Presentation #9 – Slide – Answer International – Cindy Cooley, Director of Global Partners |
| 3:35-3:45 | Q & A |
| 3:45-4:05 | Presentation #10 – Handout – SPARK Worldwide – Lisa Oakes, CFO |
| 4:05-4:15 | Q & A |
| 4:15-4:20 | Wrap up / Adjourn |

APR 12 2022

Tabled

American Rescue Plan Project Submission Form

Project Name - *A short name for your project, such as "Sewer Line Expansion along Main St."***Client Services Expansion Project****Primary Point of Contact** - *The name and contact information for the person in your organization that should be contacted first about this project for more details.*

Jennifer Woods, Executive Director, 349 NW Renfro St. Burleson, TX 76028
 817-295-6252, office. 817-689-7970, cell
 jennifer@yourharvesthouse.org

Project Description - *A description of your project or item for purchase in 250 words or less, including why the project is needed and how that need will be met*

Harvest House must expand our facilities to meet the demand created by the pandemic. Due to limited space, we cannot accommodate clients in the building as before. When the pandemic started, we were forced to move from in person, choice shopping, to drive thru food services. This also limited how we provided clothing and necessities in our clothing store. We must plan to meet our community needs in a personalized and safe manner as the endemic continues. The community has rallied and provided more donations than ever before. In fact, we have received more gifts in the past 2 years than ever. Storage is a major issue. We are renting containers to hold all the food and clothing we cannot bring into our small warehouse. Additionally, we have no private space to meet with clients. There is a need for various kinds of education and support that we cannot provide due to a lack of space to hold classes. We have seen an increase in clients needing more employment resources to transition into new career opportunities to create stability. With these funds we would be able to expand our client services, storehouse, and education areas to help people get back to work. It would enable us to stop turning away food and other donations due to storage issues. This will help us help clients make permanent, long-term changes.

Project Location - *Where your project will be performed, such as "500 feet along Main Street". Include maps, if available.*

This project will take place in multiple spaces. First, the expansion of our resale shop across the street to 101 NE Wilshire Blvd., Burleson, will receive food overflow and household and clothing items. Second, out of our existing space at 349 NW Renfro St. Burleson, TX 76028, we will create one-on-one client services, office spaces, educational space, and expanded warehouse/grocery store. The map included shows the proximity of the two locations.

Project Budget - *A rough estimate of the budget required for your project.*

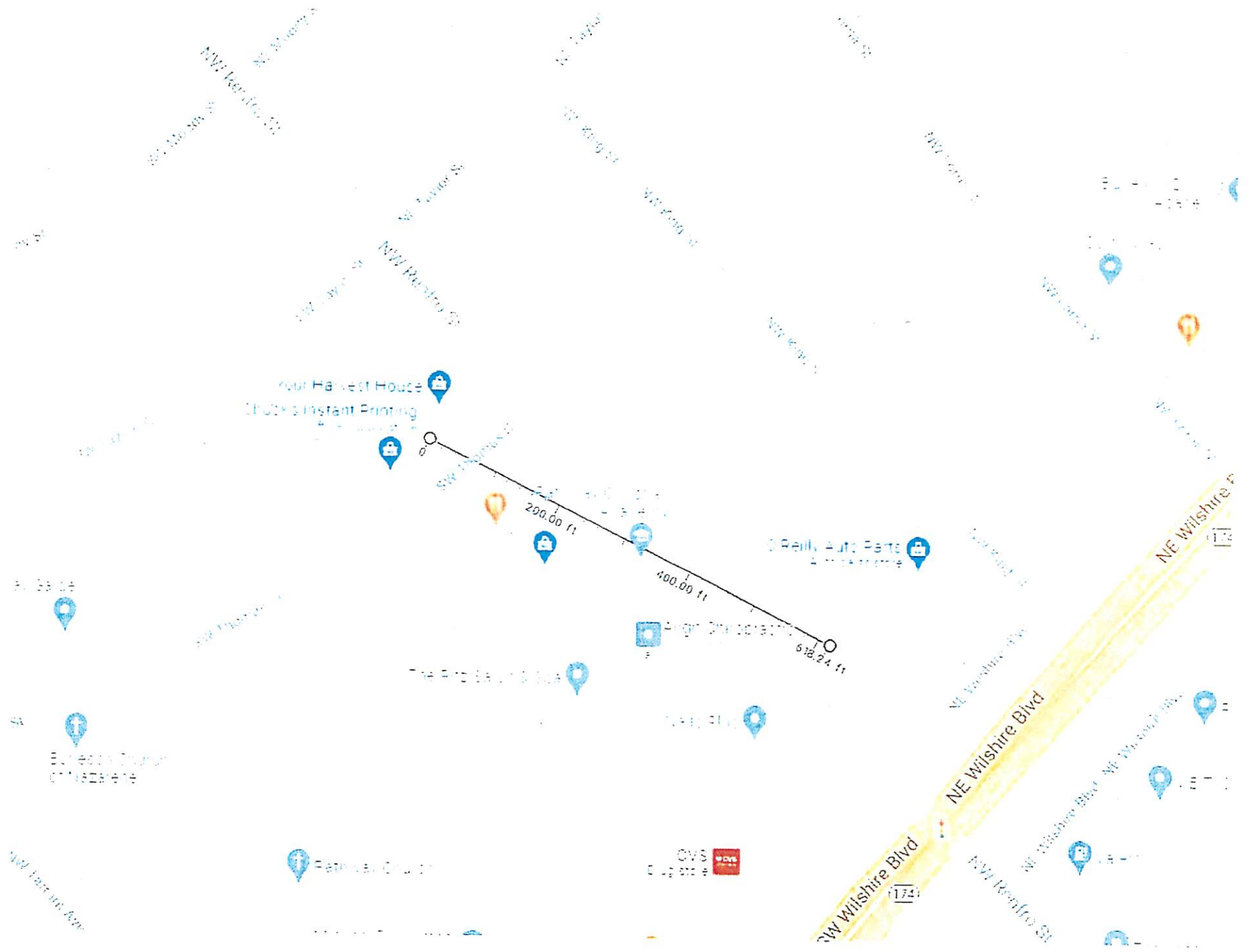
\$200,000: 101 NE Wilshire Blvd, Burleson, TX 76028. Create overflow warehouse and Storehouse space; ADA bathroom, create food warehouse and donation space for all in kind donations (clothing, food, etc.). (Itemization available if needed).

\$1,000,000: 349 NW Renfro St. Burleson, TX 76028. Renovate existing space, (move walls, paint, fix building leaks, bring electrical and plumbing up to current code, and building up to ADA standards, create education space, add walk in refrigerator to accept more fresh items). Add an additional box truck, new signage, Moving the Resale store will allow us to provide more space to distribute free clothing and furniture to those starting over and allow us to accept more fresh and frozen foods that we currently turn away.

Project Timeframe - *An estimate of how long it will take to start the project, how long the project will*

take to complete, and how long it will take to expend all funds related to the project.

This project will begin immediately. Phase 1 to be completed no later than August 1. Phase 2 (349 NW Renfro) may possibly be done concurrently as the warehouse space in the new location is completed. Phase 2 will be completed 18-24 months post award.



your Harvest House
Photo's Instant Printing

O'Reilly Auto Parts
Auto Parts & Accessories

Alight One Stop

Blessed Church
of Nazareth

Patricia's Church

OVS
Clothing & Accessories

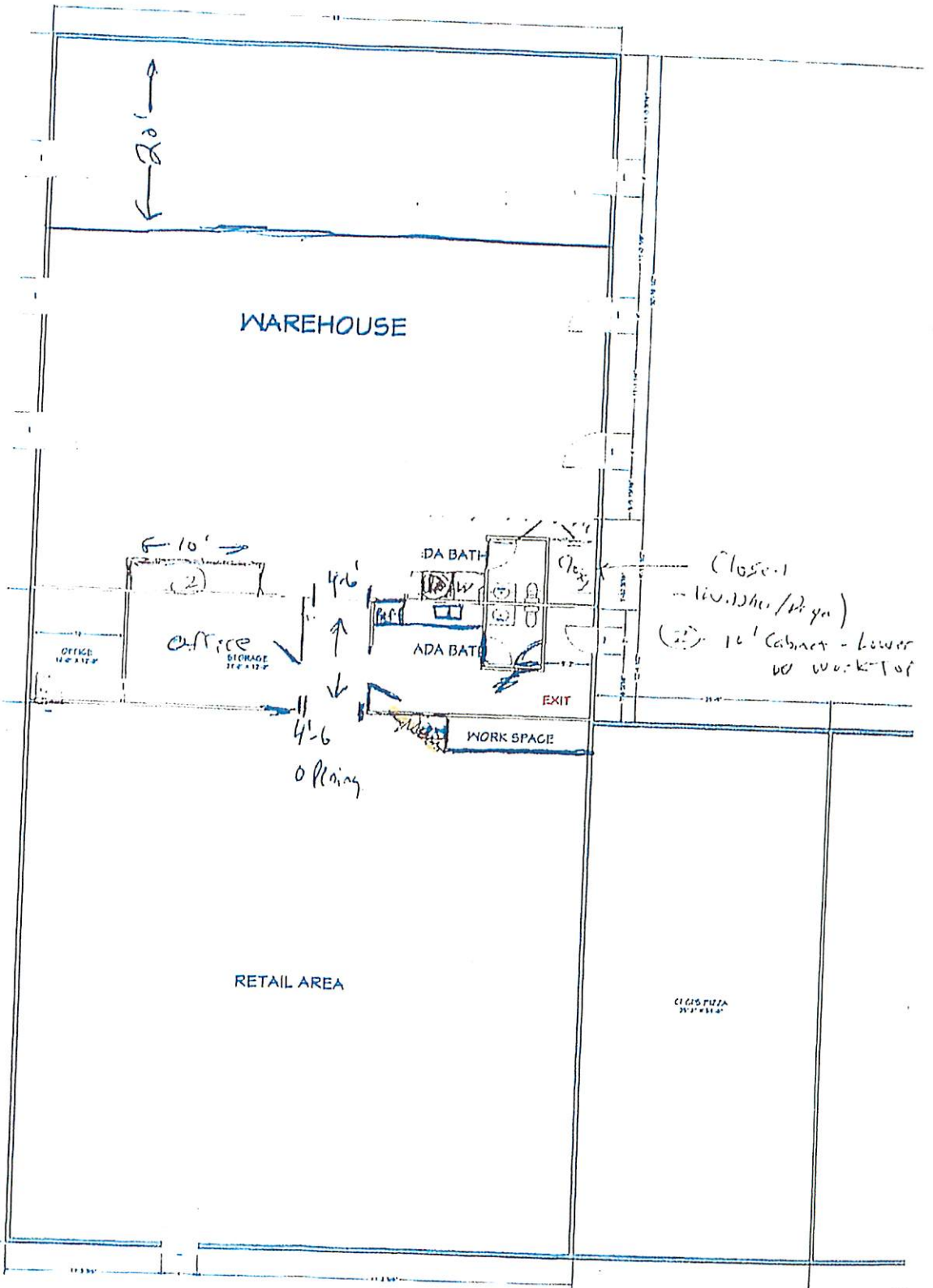
NE Wilshire Blvd

NE Wilshire Blvd

NW Wilshire Blvd

NW 174th St

NE Wilshire Blvd - NE 174th St



Rachel Sitler

From: Jennifer Woods <jennifer@yourharvesthouse.org>
Sent: Thursday, January 27, 2022 1:46 PM
To: kevin.dyer@grantworks.net; County Judge (public address)
Cc: Jennifer Woods
Subject: American Rescue Plan submission for Harvest House-Burleson
Attachments: DOC012422-012422-006.pdf; ARPAFundingCoverLetterForm.pdf; Harvest House-Resale.Pantry Expansion Map.pdf

Some people who received this message don't often get email from jennifer@yourharvesthouse.org. [Learn why this is important](#)

*** External sender - use caution with links or attachments ***

Dear Mr. Dyer and Judge Harmon,

Please find attached, the grant application for Harvest House. Let me know if there are questions or concerns. We are excited about this opportunity, should we qualify. Thank you for your consideration.

Jennifer Woods
Executive Director
349 NW Renfro Burleson, TX 76028
O 817-295-6252

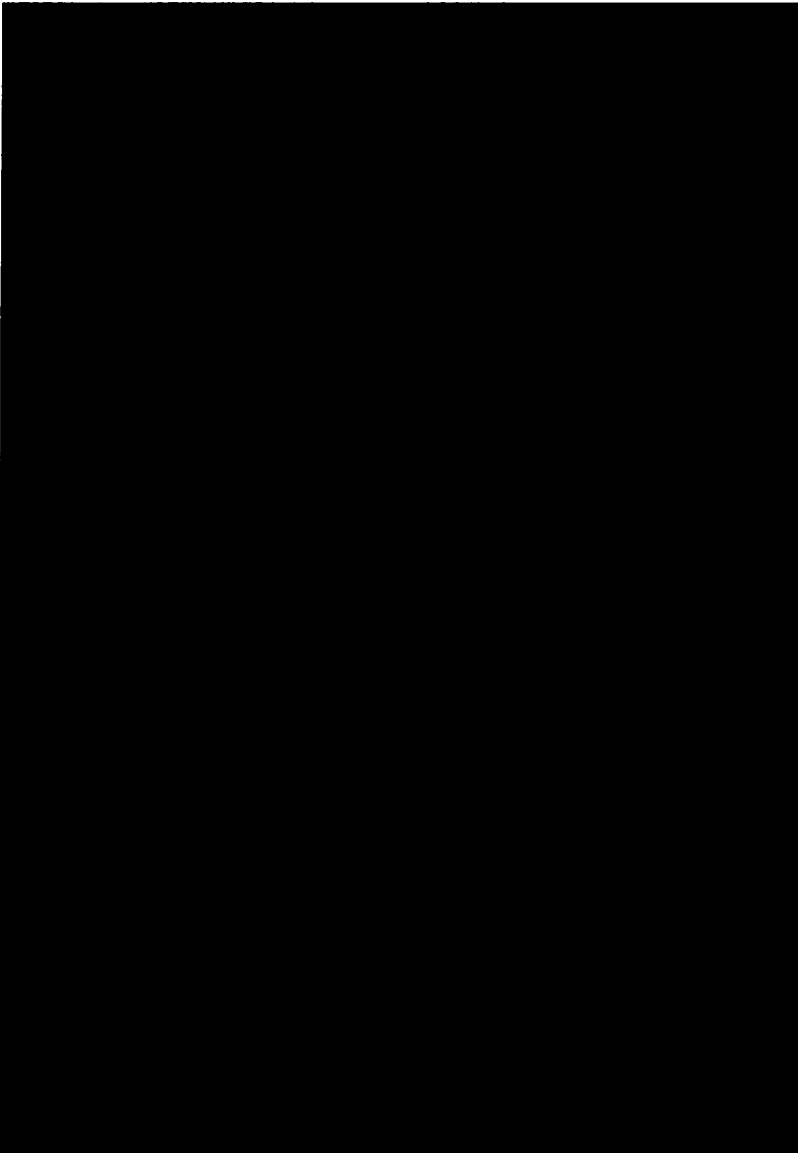
www.yourharvesthouse.org





HARVEST HOUSE
FEED ▪ CLOTHE ▪ RESTORE



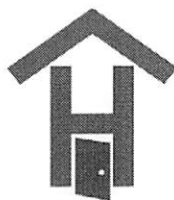


Our Mission: The Harvest House provides basic necessities, spiritual encouragement, education, and care to individuals and families in our community by following Biblical principles.

Our Vision: To help families break the cycle of hopelessness by providing resources that assist in restoring their dignity and independence.

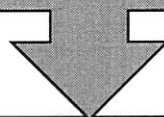
Our Values: Harvest House will implement its mission and vision by sharing the love of Christ through service and spreading the gospel; by maintaining integrity and transparency in service and business matters and will function as a team player with other organizations in the community who seek to help those in need of nutritional, financial, or spiritual restoration.

Statement Regarding Racism: We, the Board of Directors, Leaders and staff of Your Harvest House are united in our understanding that racism, prejudice, and racial discrimination in all forms are sinful and are in direct opposition to the teachings of Jesus. Such things as these should not be overlooked or tolerated within our communities. We stand together in this public declaration that racism, prejudice, and racial discrimination, whether explicit or implicit, are incompatible with the command of our Lord Jesus to "love your neighbor as yourself (Matthew 22:39)." Therefore, we accept our sacred responsibility before God to address racism, prejudice, and racial discrimination within our organization and hereby resolve to personally model Christ-like love toward all people, confront racial discrimination wherever we observe it, and bring God's Word to bear upon such sinfulness through our acts of service. We affirm each member of our community regardless of race or ethnicity and welcome each to our community as neighbors. We pledge to do our part in making sure our community is one of inclusion and hospitality to all. Driven by our faith in the Lord Jesus, we implore each and every member of our communities to stand with us in our determination to stand against the sins of racism, prejudice, and racial discrimination and to embrace the challenge of the Prophet Micah, "to act justly and to love mercy and to walk humbly with your God (Micah 6:8)."



HARVEST HOUSE
FEED ▪ CLOTHE ▪ RESTORE

Since 2016, Harvest House has grown its annual income from \$163,000 to nearly \$700,000 in 2021.

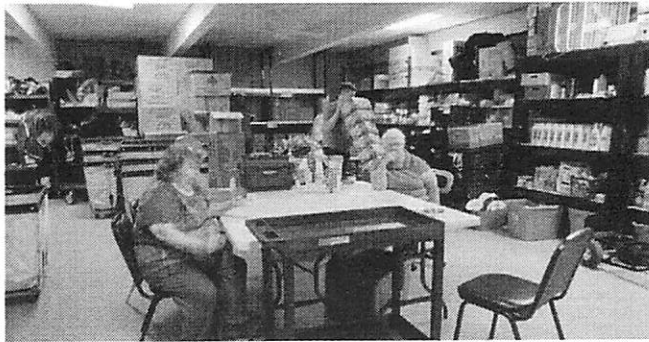
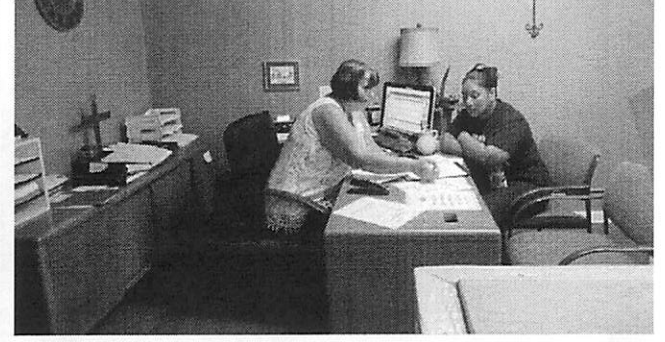


In those years, the services we increased our food giving from 40 lbs. of necessities, to frequently 75-150 lbs. of quality food provided to families a minimum of one time per month. Frequently families need help more frequently. We are glad that we can help without fear of our pantry being empty.

Though families can take more food, they don't always. They turn it down.

They know they can come back.

We have created an element of food security for those who are food insecure.



MORE THAN A PANTRY

During the pandemic, we did not close. We continued to serve food through our drive thru. Faithful members of the community, churches and businesses supported us to keep food in the pantry, financial donations to help everyone keep their lives moving forward and help us grow.



COVID Changes

From 2019 to 2021 we saw a 300% increase in our Resale store sales and clothing distributions.

Our pantry has seen a 28.8% increase in food distribution.

We gave away nearly \$63,000 in clothing and household assistance through our resale shop.

We lost volunteers, we changed our hours, we continued to serve and didn't close.

Fundraising changed.

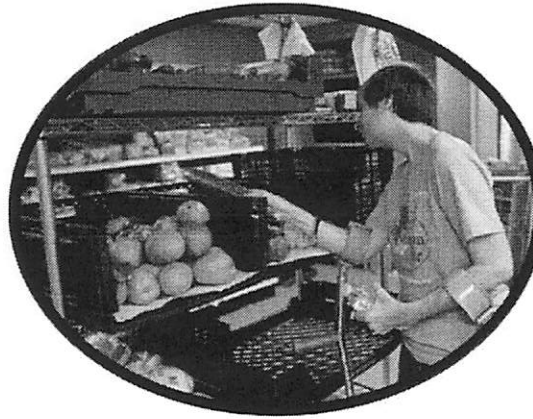
Challenges

Donation Drop off has always been challenging, as people get caught in the drive thru line.

Small spaces don't allow for private client conversations.

Not enough space for large volunteer groups—that we need!

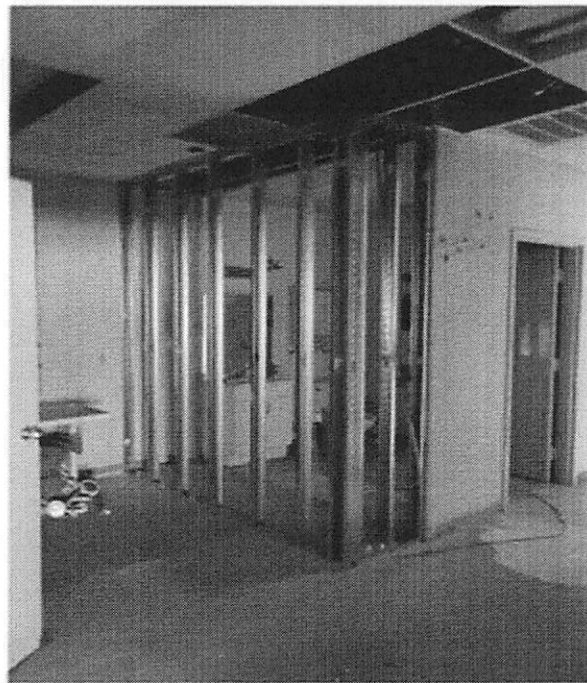
Adapting fundraising. We added Vineyard Vibes and continued with the Harvest Feast.



Currently in two buildings that are adjacent to one another, Harvest House is limited by inefficient space configurations and insufficient square footage for both current and future demand. Built in the 1940s, the 6,000-square-foot main Harvest House building at 349 Northwest Renfro in Burleson is home to The Storehouse retail shop, food pantry, client aid meeting space and offices for nine staff members. The 1,200-square-foot annex building next door functions as a special event staging area, additional office space and storage.



Feasibility Study results: \$1.2 M needed to complete our project.
Lease Hallmark



What next?

Moving our ReSale Shop to least the old Hallmark space as work to transform the original building.

ReSale Shop will be growing from 1200 to 5000 square feet.

This will bring value to the community by:

- Providing job opportunities
- Volunteer opportunities
- Educational opportunities (space opening for classes)
- Partnerships for jobs-referral program
- Job training

So. Much. More!

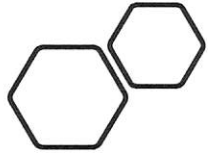
- What does restoration mean biblically?

- In the Bible, restoration is **always in abundance**. When something is restored, it is always better than it was to begin with. God's promise to us is a better way, a better life, a better future for ourselves and our loved ones.

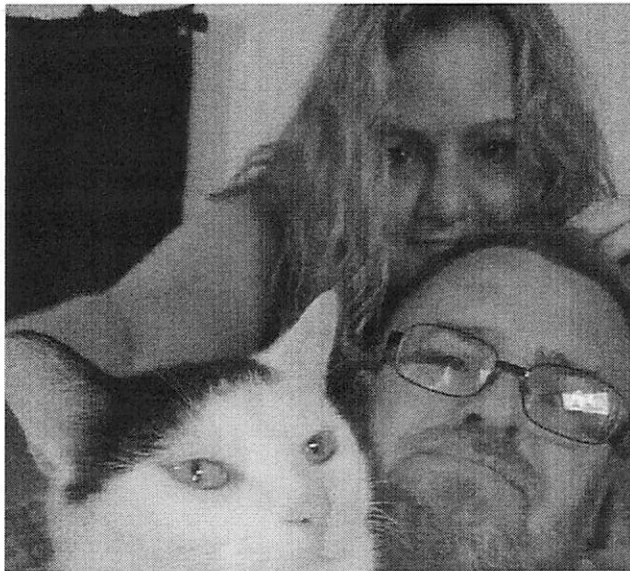
Who we help, have helped.

- Homeless, battling cancer and heart issues. We were able to help this family, Valarie and James.
- Over 2 years we helped partner with Burluson PD and others to help walk with them as they got their lives worked out.
- They are now in a house, with family, and working.
- We continue to stay in touch, though they are now out of state.





Now! Their new
RESTORED life!

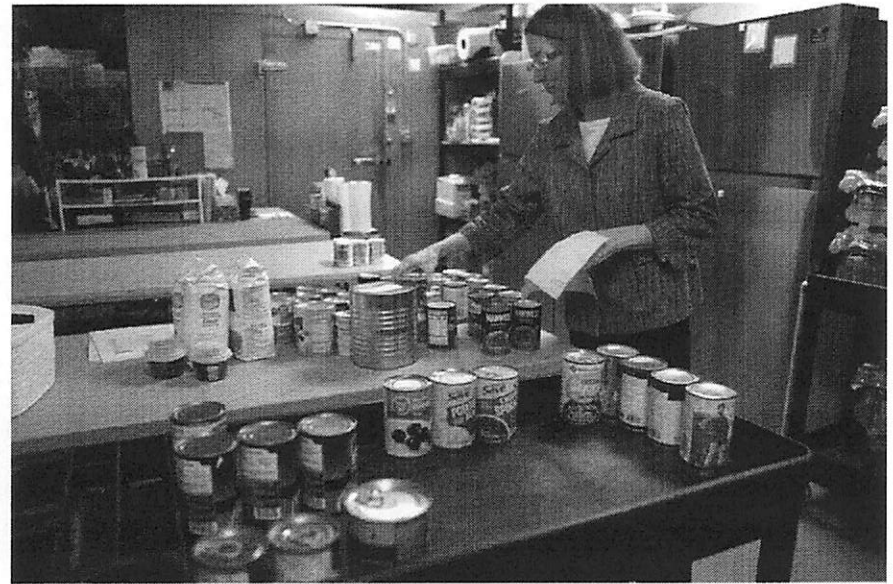
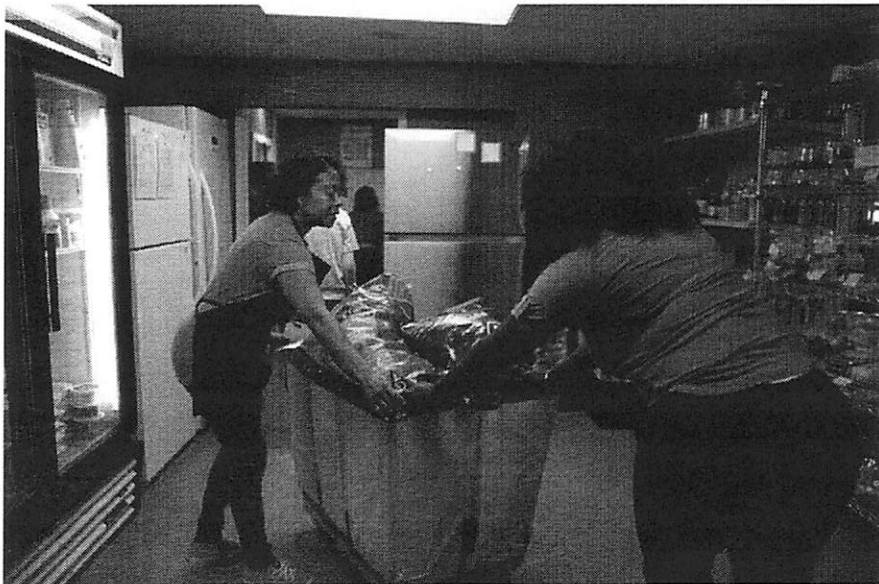


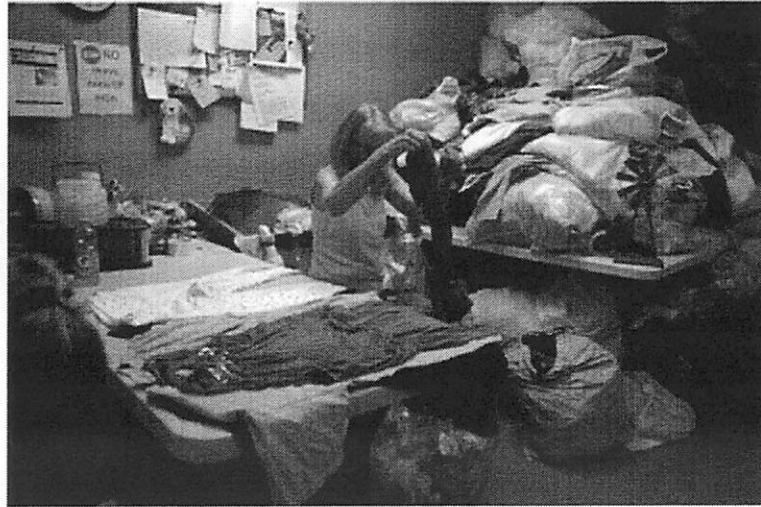
Second Chances...

- From a very challenging past, to prison. This single Mom was ready for a change. Through our partnership with Crazy 8 Ministries, she was referred to us for work. She has been with us for 2 years and was promoted to our Client Aid Coordinator.
- Her compassion, professional background, and real-life experiences have helped us to improve our services.
- With a facility that can accommodate the programs we need, more success stories like this can happen.

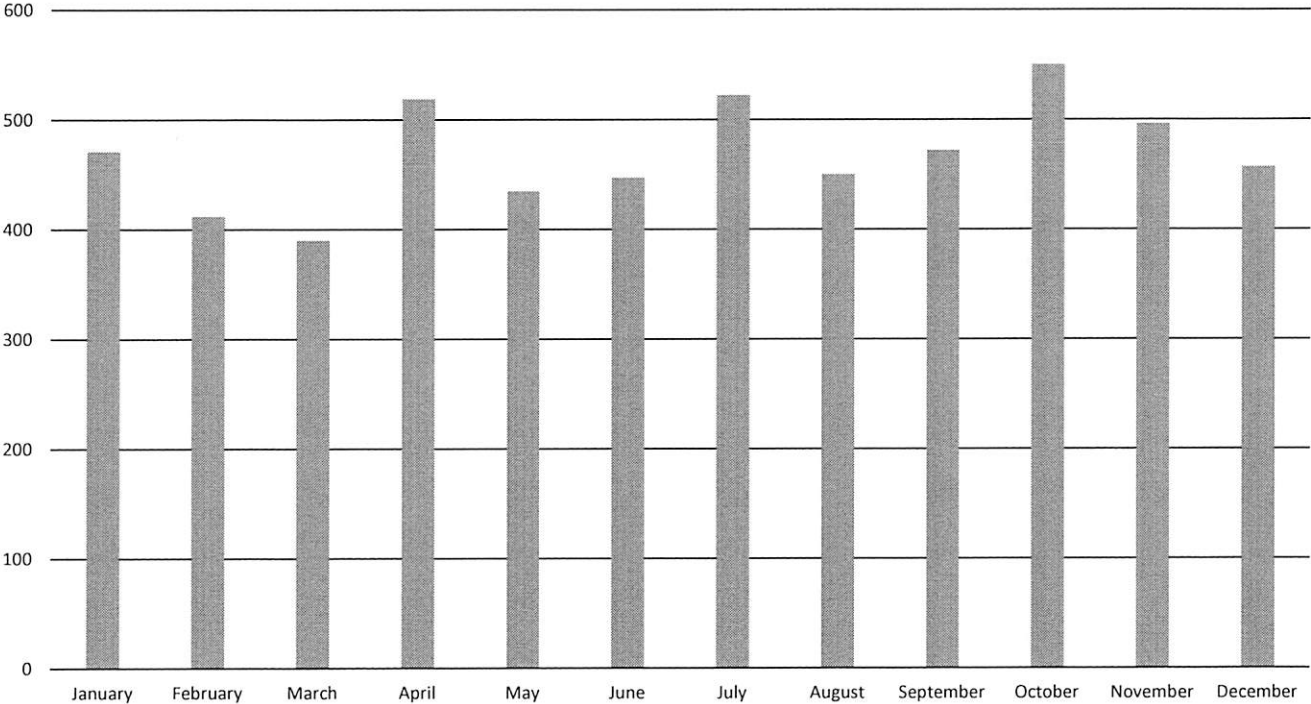


Space issues.



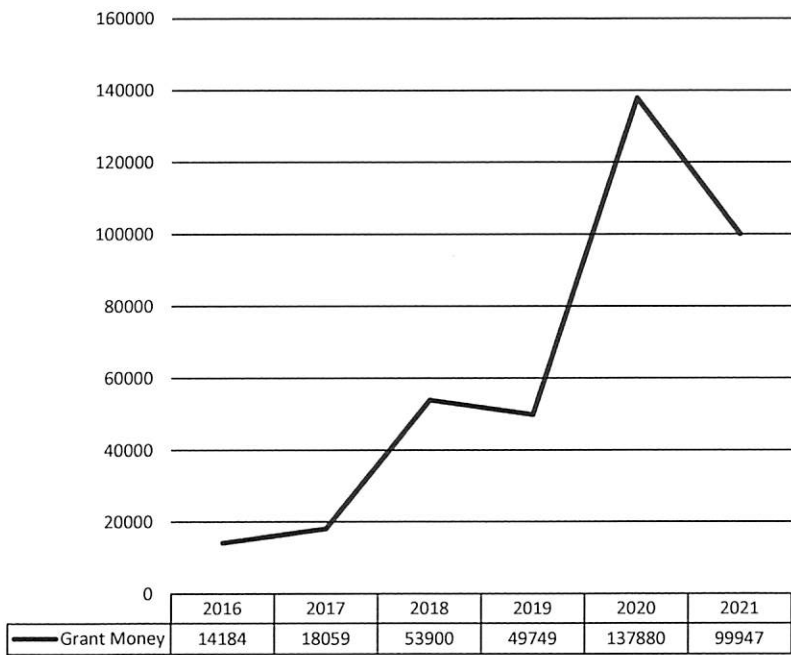


Food Averages per month 2019-2021

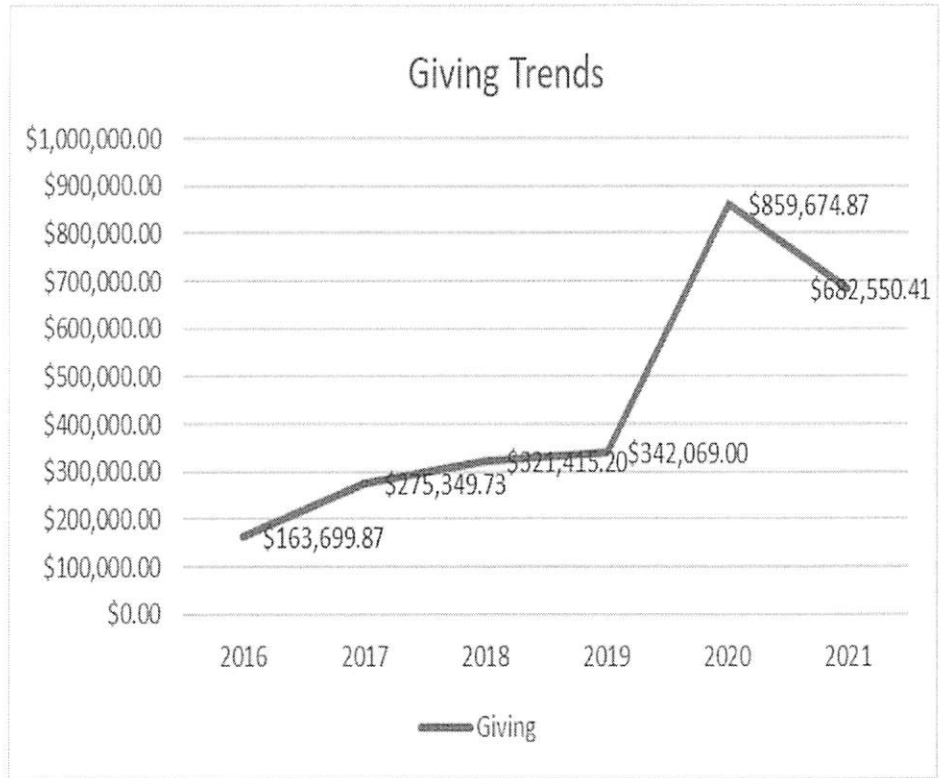


Monthly average is 463 families per month from 2019-2021. A 47% increase would be 985 families per month or more.

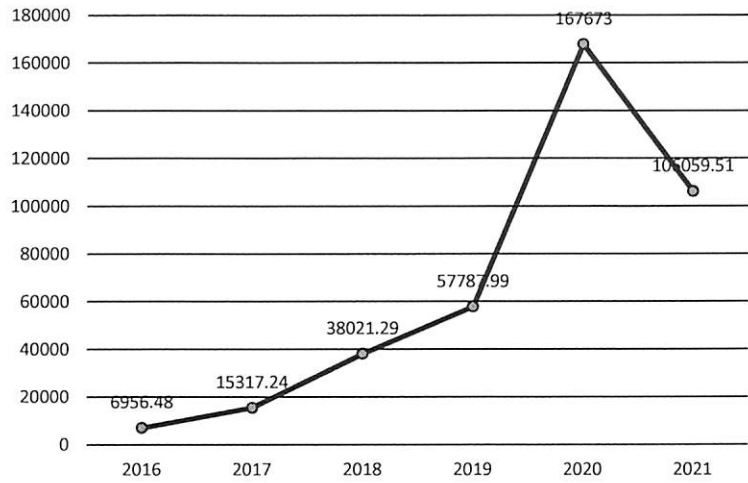
Grant Growth Chart 2016 - 2021



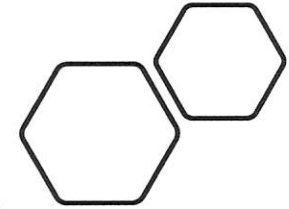
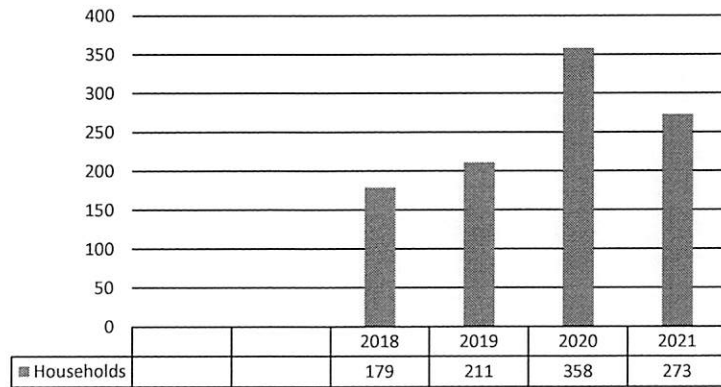
Giving Trends



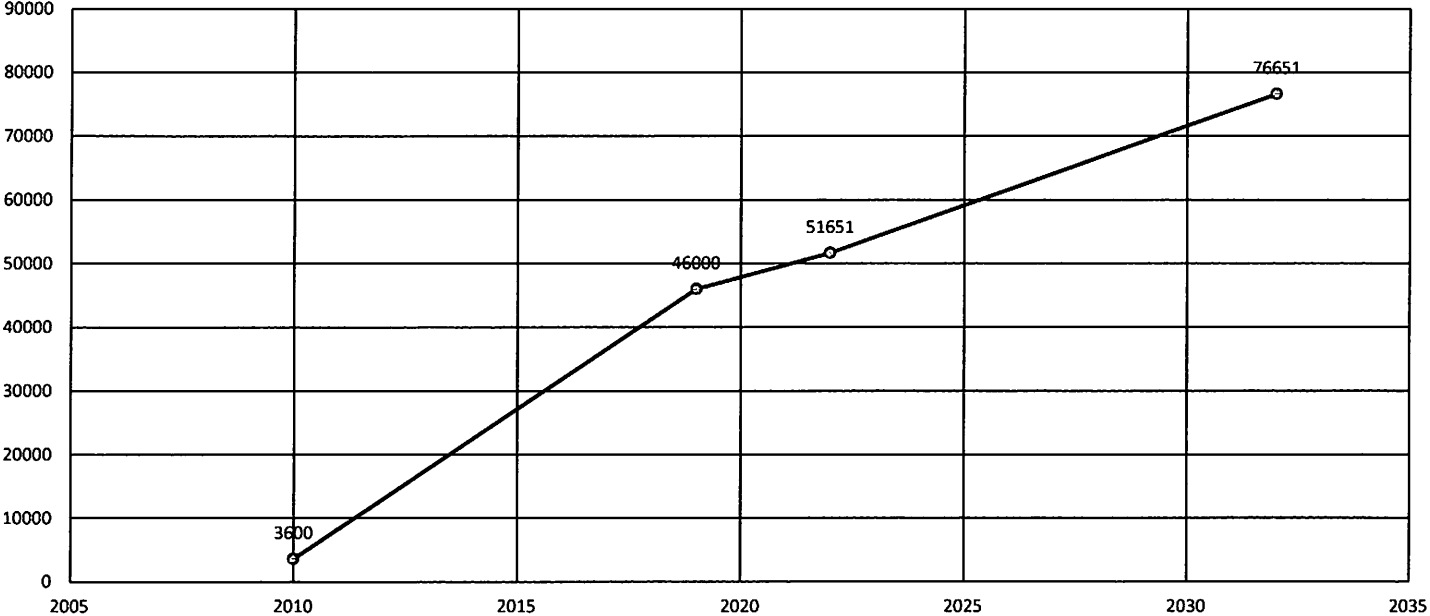
Financial Aid Assistances



Financial Assistances by Household



Projected Growth in the City of Burleson over the next 10 years.



Current predictions show Burleson, TX growing by 47% in the next 10 years. We expect that to be similar across Johnson County.

Organizations we provide Bread and Food to in 2021

(Delivered free and without any cost to them)

Bread Connection- 39,000 lbs.

Christian Family Life- 24,000 lbs.

Promises Community Ministries-50,000 lbs.

Faith to Faith- 21,000 lbs.

Full Gospel Tabernacle- 24,000 lbs.

Operation Blessing- 26,800 lbs.

Reserve at McAlister Senior Living (low- income residents)- 76,000 lbs.

Thomas Square Low Income Senior Living- 16,500 lbs.

Began as eggs and a few items would deliver a small bag that started in 2014.

Joshua Adventist Church- 1,100 lbs.

Alvarado Help Hands for Jesus-200 lbs.

Community Partners

Center for ASD (Autism Spectrum Disorder)

Crazy 8 Ministries

Harvesting International

Midwest Foods

Promises Community Ministry

First United Methodist Church

Burleson Church of Christ

Christ Chapel

Pathway Church

Seventh Day Adventist Church-Burleson

First Christian Church

Texas Workforce Solutions

EOC/ORS

Burleson ISD

Joshua ISD

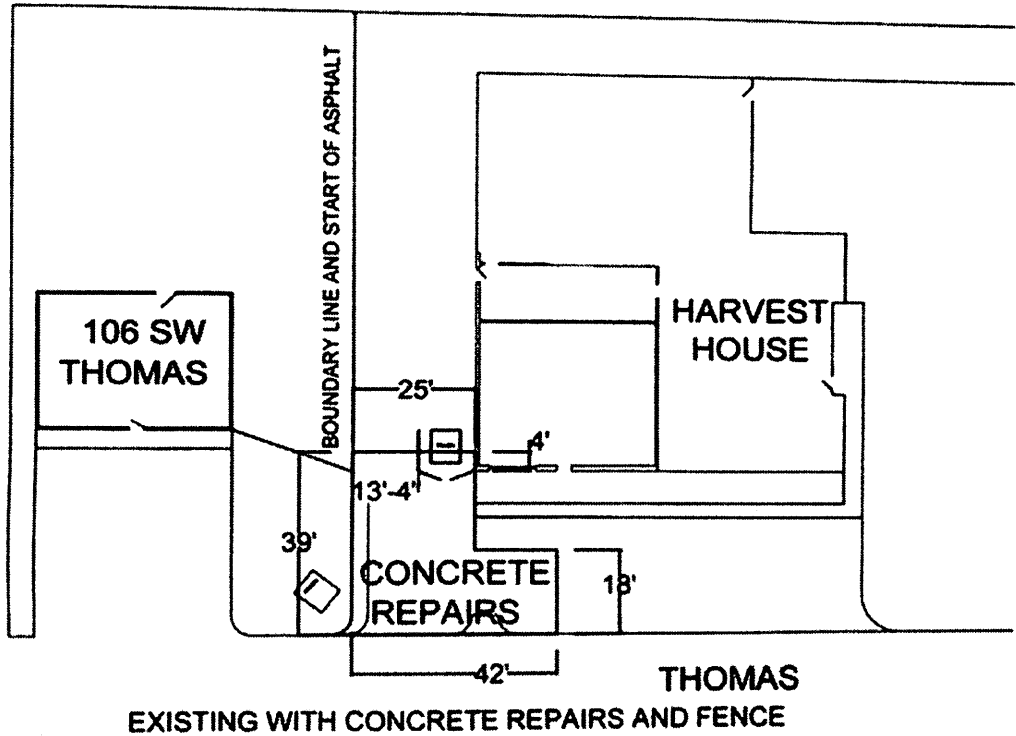
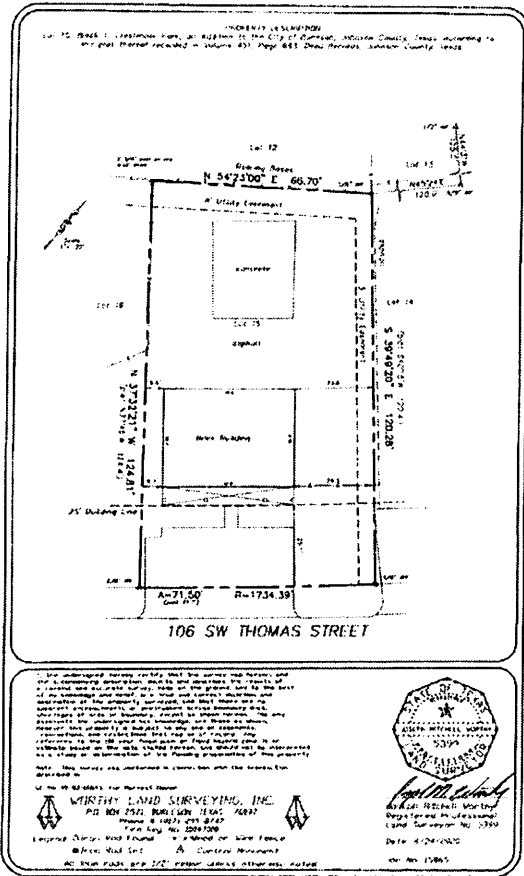
Everman ISD

United Way of Johnson County

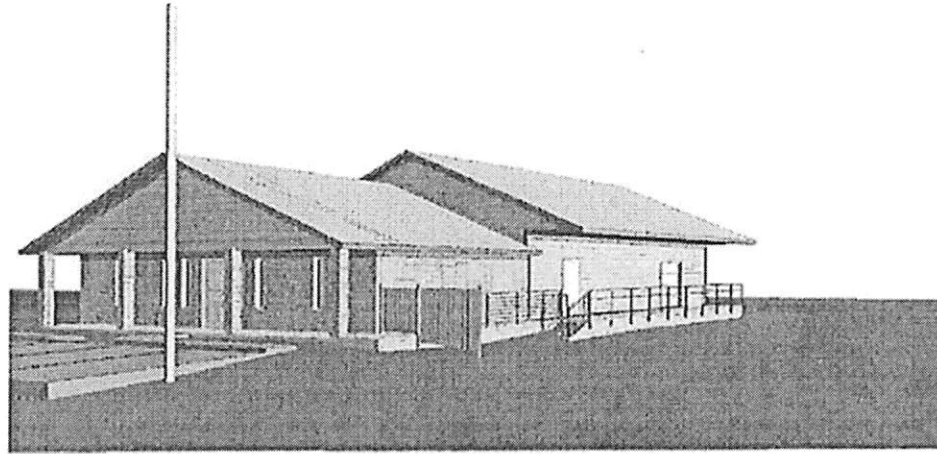
City of Burleson

Burleson Police Department

ReInspire



4/14/2021



 © 2021 PMT

SHEET INDEX AND GENERAL INFORMATION

PROJECT

Harvest House
Harvest House - Rosale Addition
100 S. 1st St. - 1st Floor
Columbus, Missouri 65201

PMT

A0.00

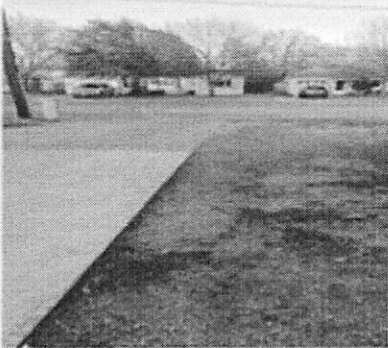
PROJECT NUMBER

100 S. 1st St. - 1st Floor

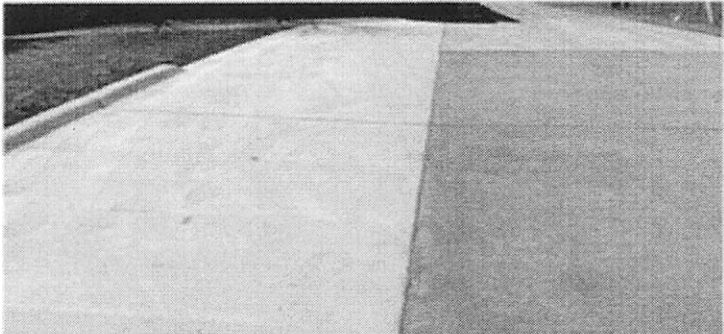
Band Aid



Food Drop Off: BEFORE



Food Drop Off: AFTER

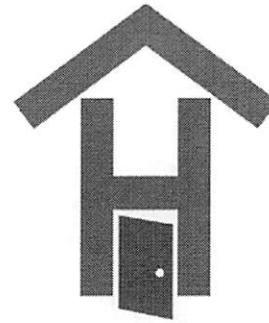


With the expected growth in our community, with the small space that is not set up for the work we need to do. This is an old house. We have many extra walls and inefficient space.

Our electrical is so old we have an unsafe electric shut off switch and disintegrating water pipes (caste iron).

We have known we need new space, so we hired MGales and Associates to complete a Feasibility Study this past summer. It was a great, eye-opening experience. We know what we need but moving into a capital campaign during this kind of inflation and global uncertainty, we have been hesitant. But we took a leap of faith and leased the old Hallmark store knowing that if we did the campaign, we would need to have a place to move services to continue during construction. This also began the process of expanding our services and will increase our revenue to help us become more sustainable. We know that as money is tight, our services: from thrift shopping to financial assistance and food resources, are going to be more and more needed.

Now we need to look at our existing buildings to determine our next steps. Can we remodel, tear down and start over, but we will need funding to know what our options are!



HARVEST HOUSE

FEED ■ CLOTHE ■ RESTORE



THANK YOU FOR YOUR TIME.

www.yourharvesthouse.org
349 NW Renfro St. Burleson, TX 76028